

CARMAGIC, LLC

Installation of electric pump for windshield washer system Porsche 914.

Switch replacement:

With the steering wheel removed, remove the turn signal/wiper switch assembly. Next remove the old valve. **Image 1**

Enlarge the hole to 4mm, so the pin of the new switch will fit.

Image 2

Install the new switch using washers to adjust, so the pin will push all the way in when the lever is pulled.

Image 3

Once the assembly is installed and the wires are pulled in, cut the wire to length and attach on one of the wire end a round terminal connector for ground. This will be connected to ground, with the fuse box mounting screw. On the other wire end attach the push in connector, and plug it to the empty connection in the relay.

Image 4

(Do not connected to the connector in the center of the relay)

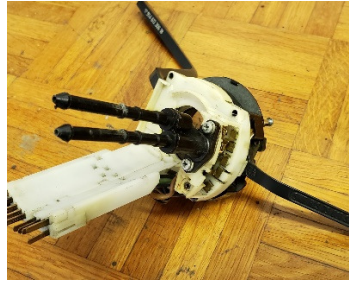


Image 1

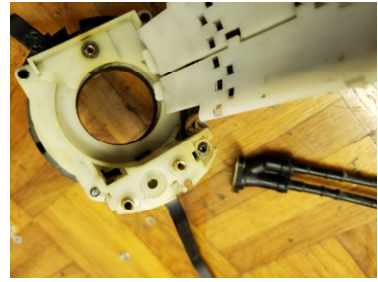


Image 2

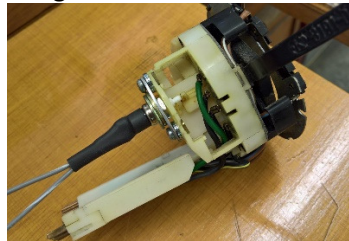


Image 3

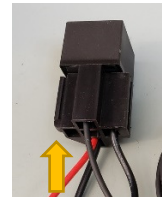


Image 4

Relay and pump installation. This is an example how the relay and pump can be installed, it is only a suggestion.

Remove the fuse box. Drill a 5mm hole to mount the prewired relay, using included fastener. **Image 5**

Install the relay and connect the red wire with the inline fuse to the 4th connector from the right. This is fuse No. 9. See arrow

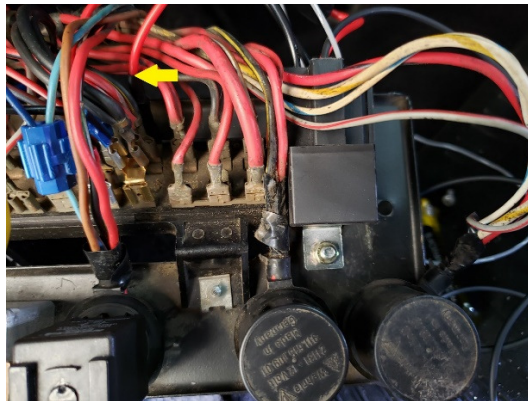


Image 5

Pull the long black wire thru the trunk wall and then to the right side in the gas tank section where the washer pump will be mounted. **Image 6**

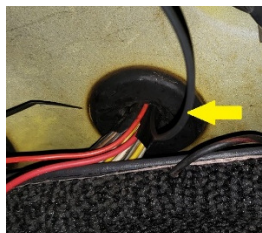


Image 6

CARMAGIC, LLC

For the pump installation drill a 3mm hole and install the pump with the included fastener

Image 7

Connect the short pre wired black wire to the pump -, and the other end to the mounting screw of the pump. Cut the long black wire to length and add the terminal and shrink hose, with is included with the kit. Plug it to the + at the pump. Remove all not used hoses, and run one hose from the left nozzle to the right side, connect with the check valve and the right nozzle and a piece of hose to the Pump at the "D". Enlarge outlet at the washer tank to 3mm, and connect a piece of hose and run it to the pump inlet "B"
Remove the center section of the filler cap and re-install it with the blank disc, included in the relay kit.

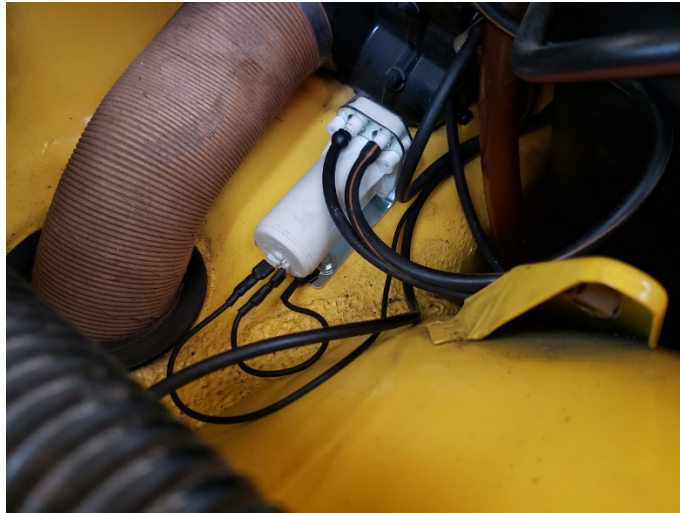


Image 7

When installing the fuse box back in, place the inline fuse so that it can be accessed without removing the fuse box, see arrow.

Image 8

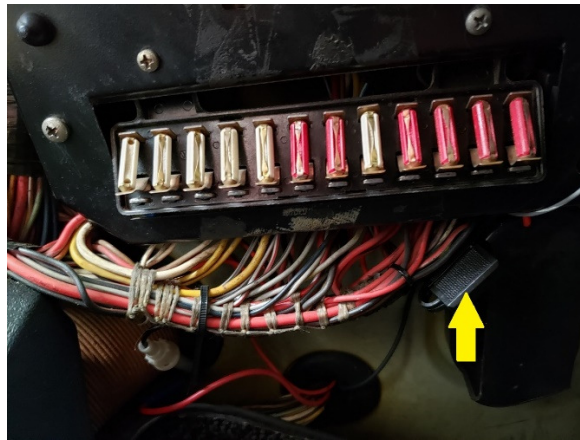
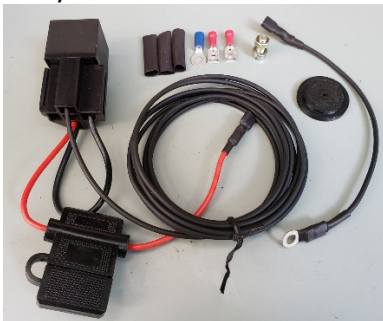


Image 8

Washer switch



Relay installation kit



Pump



Disclaimer:

The correct installation of these parts is your responsibility. I cannot take any responsibility for any damage to your vehicle or equipment.