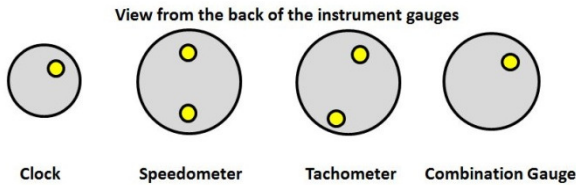


CARMAGIC.US

Installation of Instrument Light LED converter for 6V Cars:

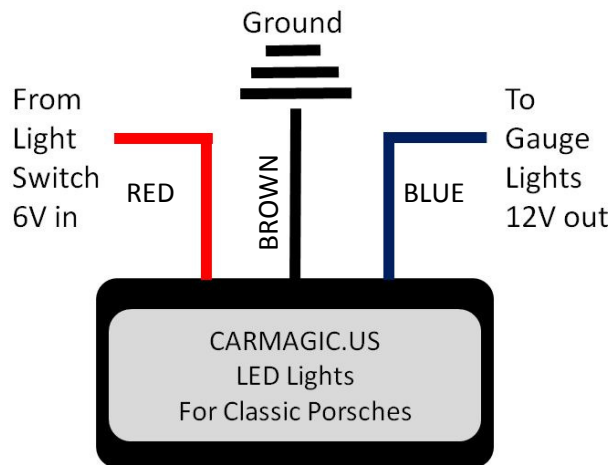
Warning ! Replace instrument Bulbs first, before installing the 6 to 12 volt converter. If the converter is used with 6 volt bulbs, the 6 volt bulbs will be destroyed because of overvoltage.

DO NOT USE this converter for any other application. If your 356 is 12V, skip the converter installation step



Replace all instrument light bulbs with the new 12V LED bulbs.

6 to 12 volt converter for LED Instrument Lights

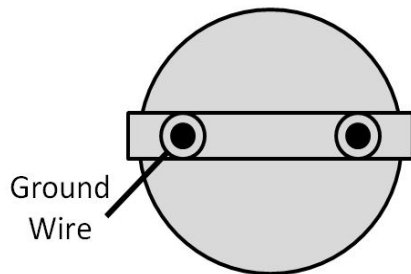


Disconnect the Gauge light plug from the light switch, 58b.

Connect the plug, removed from the light switch to the BLUE wire of the converter.

Plug the red wire from the converter to the light switch where the gauge light wire was plugged in.

Also confirm that the gauge light wire only goes to the gauge lights, and no other lights with 6 volt bulbs.



Connect the Brown wire from the converter to ground. The easiest way is to unscrew one of the Bracket nuts, and attach the ground terminal there. See picture at the left.

Enjoy your instrument lights.

Included: 12V cars: 7 BA7s LED (6 plus 1 spare), 1 Instruction

6V cars: 7 BA7s LED (6 plus 1 spare), 1 Plug and Play Converter 6 to 12V, Cable ties, 1 Instruction

Warranty:

The LED lights are warranted for 2 years from the date of purchase. Warranty is void when the converter is used for any other application, and the 12 volt LED's are used with different voltage.

Please email to notify us prior to returning items for warranty exchange. Return shipping costs are the sole responsibility of the customer.

Disclaimer:

The correct installation of the LED lights is your responsibility. I cannot take any responsibility for any damage to your vehicle or equipment.