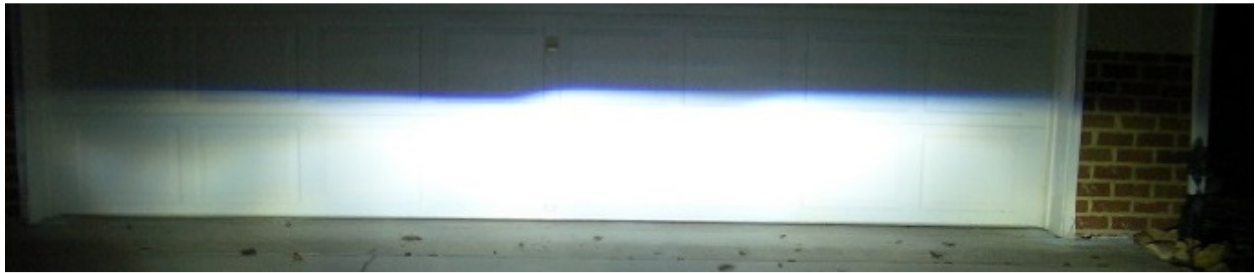


## Installation of new 7" LED Headlights

For Porsche 911 with Sealed Beam (sugar scope) Headlights



Before removing the old headlights drive the car in front of the garage door or a wall and turn on the lights. Mark the horizontal line where the light ends with a piece of tape, so you have a reference in case some adjustment is needed after the LED's are installed.

Remove the ring and the old sealed beam light by removing the 4 screws.



Disassemble the light from the holder: Remove the 3 screws which hold the chrome ring.

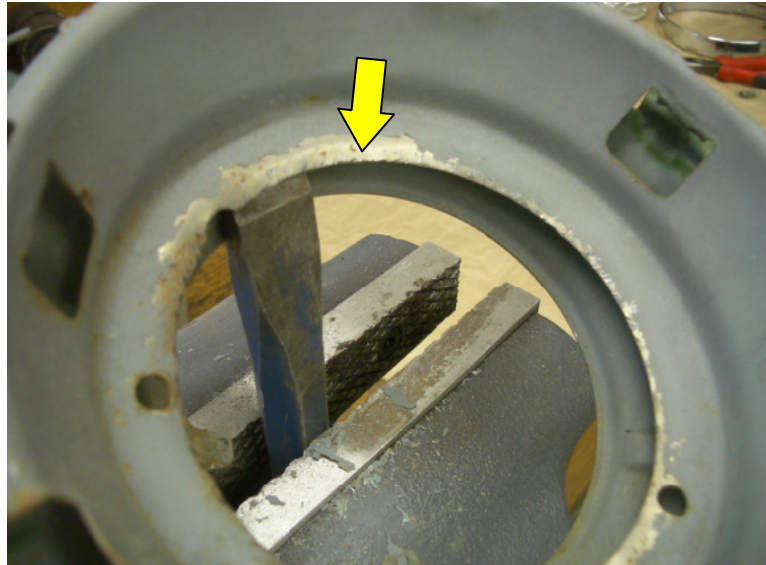


It could be possible that the back of the new LED has some interference with the holder.

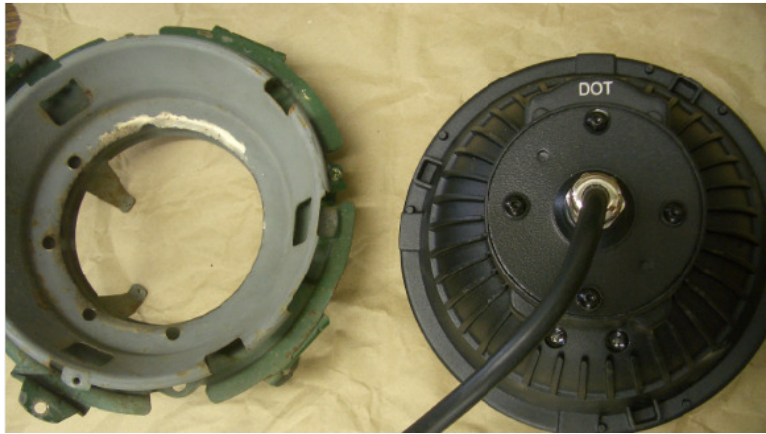
In this case it is necessary to slightly bend the inner ring as shown in the picture.

Just take flat chisel or simmular and put in the vice and hammer the edge a bit back. See arrow.

This is also a good oppportunity to clean up the holder and give it some new paint.



Make sure the LED fits in the holder.

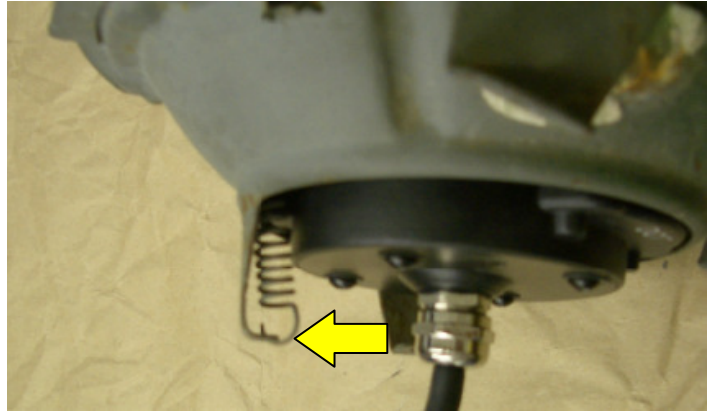


Install the LED lamp with the chrome ring and the 3 screws.





The support where the tension spring is connected may need to be bent a bit to the outside. See arrow.



Now install the assembly with the 4 screws.



And put the ring back on.

Done.



**Warranty:**

The LED lights are warranted for 2 years from the date of purchase. Warranty is void when these 12 volt LED's are used with different voltage. Please email to notify us prior to returning items for warranty exchange. Return shipping costs are the sole responsibility of the customer.

**Disclaimer:**

The correct installation of the LED lights is your responsibility. I cannot take any responsibility for any damage to your vehicle or equipment.